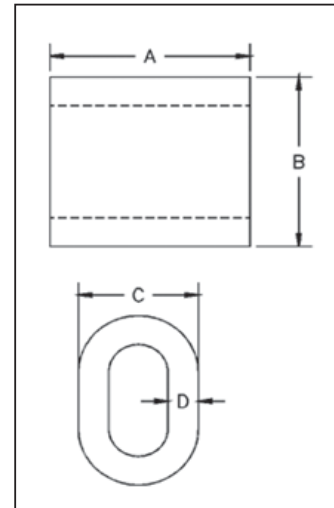


National Swage Duplex Sleeves



**S-506
Duplex Sleeves**

- For turnback wire rope splicing.
- Special processed low carbon steel.
- Turnback terminations have efficiency ratings of 94% based on the catalog strength of wire rope.
- Designed for lower temperature toughness.
- Resists cracking when swaged (equals or exceeds stainless steel sleeves).
- COLD TUFF® for better swageability.
- Stamp for identification after swaging without concern for fractures (as per directions in the Wire Rope End Termination User's Manual).



NOTE: S-506 Sleeves are recommended for use with 6 x 19 or 6 x 37, IPS or XIP (EIP), RRL, FC or IWRC wire rope. Before using any National Swage fitting with any other type la , construction or grade of wire rope, it is recommended that the termination be destructive tested and documented to prove the adequacy of the assembly to be manufactured.

S-506 COLD TUFF® Duplex Non-Tapered Sleeves

S-506 Steel Duplex Non-Tapered Sleeve Specifications										Swager / Die Data		
S-506 Stock No.	Rope Size		Weight Per 100 (lb)	Pkg. Qty.	Before Swage Dimensions (in)				Max. After Swage Dimensions (in)	Die Description	Stock No. 500 Tons 1000 Tons 1500 Tons 5 x 7	
	(in)	(mm)			A	B	C	D				
	1039334	5/16			8	17	200	1.25				1.06
1039352	3/8	9-10	13	100	1.25	1.12	.81	.14	.77	3/8 1st Stage	1192364	
1039370	7/16	11	31	50	1.63	1.41	1.02	.19	1.03	1/2 1st Stage	1192408	
1039398	1/2	13	27	50	1.63	1.44	1.02	.16	1.03	1/2 1st Stage	1192408	
1039414	9/16	14	63	25	2.25	1.72	1.23	.23	1.29	5/8 1st Stage	1192444	
1039432	5/8	16	54	25	2.25	1.84	1.28	.20	1.29	5/8 1st Stage	1192444	
1039450	3/4	18-20	91	10	2.63	2.16	1.52	.23	1.55	3/4 1st Stage	1192462	
1039478	7/8	22	126	10	2.88	2.50	1.75	.27	1.80	7/8 1st Stage	1192480	
1039496	1	25-26	187	10	3.06	2.84	2.00	.33	2.05	1 1st Stage	1192505	
1039539	1-1/4	30-32	384	Bulk	4.06	3.50	2.50	.38	2.56	1-3/8 Socket	1193023	

Note: Fittings designed only to be used on exact sizes listed.