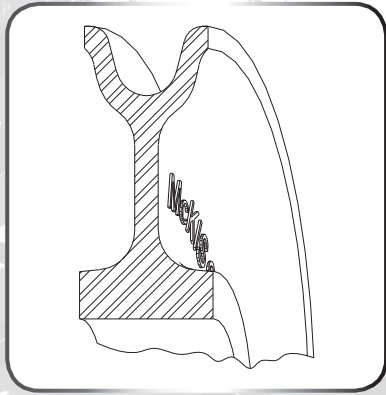


HEAVY DUTY SHEAVES
FROM 4" THROUGH 12"



Closed Die Forging

McKissick closed die forged sheaves offer the performance of closed die forging with the precision machining capabilities of CNC machinery.

For Smaller Sheaves in Heavy Duty Application

McKissick closed die forged sheaves are available in sizes from 4 inches to 12 inches. An extremely effective solution for heavy duty applications where high loads are applied.

Any of the bearings we offer with the roll forged sheaves are available.



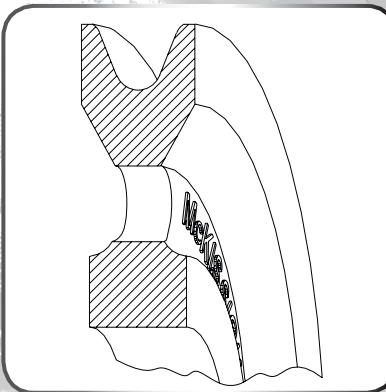
Select Range of Sheave Sizes Available

McKissick closed die forged sheaves are available in sizes from 4 inches to 12 inches, and bearing styles that best fit your heavy duty applications.

McKissick® Ductile Iron Sheaves

Custom sheaves are available. See page 287 for ordering details.

NORMAL SERVICE DUTY SHEAVES
FROM 3" THROUGH 16"



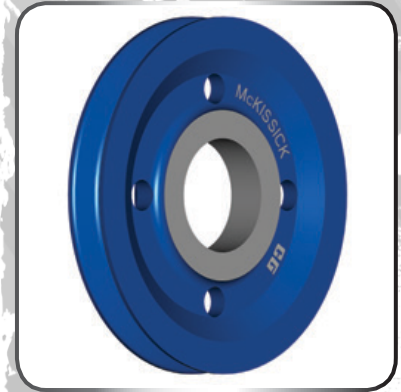
Machined Ductile Iron

McKissick ductile iron sheaves are manufactured with material that meets ASTM A-536.

For Smaller Sheaves in Normal Duty Applications

McKissick ductile iron sheaves are an acceptable solution for light or normal duty applications where sheaves are protected by sheave guards and minimal side loads are applied.

Standard roller bearings and bronze bushings are typically appropriate for use in these applications.



Select Range of Sheave Sizes Available

McKissick ductile iron sheaves are available in sizes from 3 inches to 16 inches, and bearing styles that best fit your normal service duty applications.