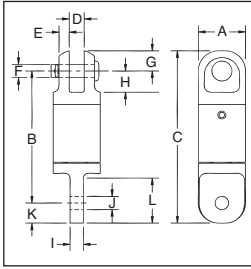


Crosby® Angular Contact Bearing Swivels

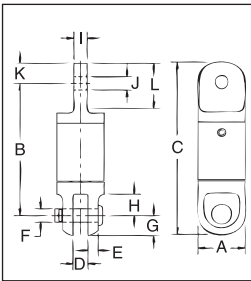
AS-3 Jaw & Eye



AS-3 JAW & EYE				Dimensions (in)											
Working Load Limit (Tons)*	Wire Rope Size (in)	AS-3 Stock No.	Weight Each (lb)	A	B	C	D	E	F	G	H	I	J	K	L
.45	1/8	1016205	.3	.88	2.50	3.25	.25	.19	.25	.38	.41	.25	.25	.38	.84
.75	1/4	1016216	.9	1.31	3.69	4.56	.31	.22	.38	.44	.56	.31	.38	.44	.88
1.5	3/8	1016224	1.9	1.63	4.19	5.44	.50	.28	.50	.69	.78	.50	.66	.63	1.38
3.0	1/2	1016232	4.6	2.00	6.19	8.13	.75	.38	.75	.94	1.19	.75	.91	1.00	2.00
5.0	5/8	1016243	9.1	2.50	7.88	10.19	1.00	.53	.88	1.13	1.50	1.00	1.25	1.19	2.63
8.5	3/4	1016250	15.6	3.00	9.50	12.25	1.56	.56	1.25	1.34	2.09	1.25	1.41	1.50	3.13
10	7/8	1016259	39.0	4.00	13.75	17.31	1.75	.81	1.50	1.75	3.50	1.72	1.63	1.81	4.69
15	1	1016268	40.0	4.00	13.44	17.31	1.75	.81	1.50	1.75	3.50	2.00	2.00	2.13	4.69
25	1-1/4	1016277	78.0	5.00	16.00	20.75	2.00	1.13	2.00	2.38	3.69	2.25	2.31	2.38	5.25
35	1-1/2	1016286	78.0	5.00	16.00	20.75	2.00	1.13	2.00	2.38	3.69	2.25	2.31	2.38	5.2

*Ultimate Load is 5 times the Working Load Limit. Individually Proof Tested to 2 times the Working Load Limit.

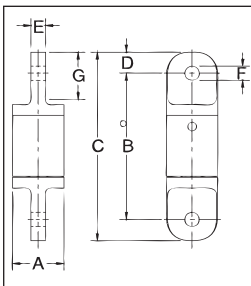
AS-4 Eye & Jaw



AS-4 EYE & JAW				Dimensions (in)											
Working Load Limit (Tons)*	Wire Rope Size (in)	AS-4 Stock No.	Weight Each (lb)	A	B	C	D	E	F	G	H	I	J	K	L
.45	1/8	1016306	.3	.88	2.50	3.25	.25	.19	.25	.38	.41	.25	.25	.38	.81
.75	1/4	1016314	.9	1.31	3.63	4.56	.31	.22	.38	.44	.56	.31	.38	.44	.88
1.5	3/8	1016325	1.9	1.63	4.19	5.50	.50	.28	.50	.69	.78	.50	.66	.63	1.34
3.0	1/2	1016332	4.6	2.00	6.19	8.13	.75	.38	.75	.94	1.19	.75	.91	1.00	2.00
5.0	5/8	1016343	9.1	2.50	7.88	10.19	1.00	.53	.88	1.13	1.44	1.00	1.25	1.19	2.63
8.5	3/4	1016352	15.7	3.00	9.44	12.25	1.56	.56	1.19	1.34	2.09	1.25	1.41	1.50	3.13
10	7/8	1016361	39.0	4.00	14.13	17.75	1.75	.81	1.50	1.75	3.50	1.72	1.66	1.81	4.69
15	1	1016370	40.0	4.00	13.81	17.75	1.75	.81	1.50	1.75	3.50	2.00	2.03	2.13	4.69
25	1-1/4	1016375	75.0	5.00	15.94	20.75	2.00	1.13	2.00	2.38	3.69	2.25	2.31	2.38	5.25
35	1-1/2	1016379	75.0	5.00	15.94	20.75	2.00	1.13	2.00	2.38	3.69	2.25	2.31	2.38	5.25

*Ultimate Load is 5 times the Working Load Limit. Individually Proof Tested to 2 times the Working Load Limit.

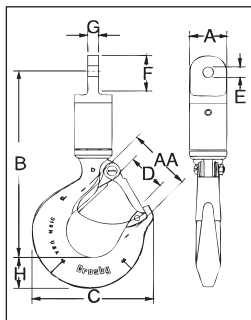
AS-5 Eye & Eye



AS-5 EYE & EYE				Dimensions (in)						
Working Load Limit (Tons)*	Wire Rope Size (in)	AS-5 Stock No.	Weight Each (lb)	A	B	C	D	E	F	G
.45	1/8	1016409	.3	.88	2.63	3.38	.38	.25	.25	.81
.75	1/4	1016418	.9	1.31	3.75	4.63	.44	.31	.38	.88
1.5	3/8	1016427	1.8	1.63	4.31	5.56	.63	.50	.66	1.34
3.0	1/2	1016436	4.3	2.00	6.13	8.13	1.00	.75	.91	2.00
5.0	5/8	1016445	8.6	2.50	7.75	10.63	1.19	1.00	1.25	2.63
8.5	3/4	1016454	15.4	3.00	9.31	12.31	1.50	1.25	1.41	3.13
10	7/8	1016463	37.0	4.00	13.88	17.50	1.81	1.72	1.63	4.69
15	1	1016472	39.0	4.00	13.25	17.50	2.13	2.00	2.13	4.69
25	1-1/4	1016481	72.0	5.00	16.00	20.75	2.38	2.25	2.31	5.25
35	1-1/2	1016490	72.0	5.00	16.00	20.75	2.38	2.25	2.31	5.25

*Ultimate Load is 5 times the Working Load Limit. Individually Proof Tested to 2 times the Working Load Limit.

AS-6 Eye & Hook



AS-6 EYE & HOOK				Dimensions (in)								Deformation Indicator AA	Replacement Latch Kit Stock No.
Working Load Limit (Tons)*	Wire Rope Size (in)	AS-6 Stock No.	Weight Each (lb)	A	B	C	D	E	F	G	H		
.45	1/8	1016502	.7	.88	4.38	2.86	.93	.25	.81	.25	.73	1.50	1096325
.75	1/4	1016513	1.5	1.31	5.56	3.16	.97	.38	.88	.31	.84	1.50	1096374
1.5	3/8	1016520	2.9	1.63	6.22	4.00	1.16	.66	1.34	.50	1.14	1.50	1096374
3.0	1/2	1016529	6.2	2.00	8.63	4.84	1.41	.91	2.00	.75	1.44	2.50	1096374
5.0	5/8	1016538	12.4	2.50	10.77	6.28	1.69	1.25	2.63	1.00	1.82	3.00	1096562
8.5	3/4	1016547	23.5	3.00	13.52	8.34	2.41	1.40	3.13	1.25	2.60	4.00	1096657
10	7/8	1016556	52.0	4.00	18.08	10.34	3.19	1.66	4.69	1.72	3.00	5.00	1096704
15	1	1016565	53.0	4.00	17.64	10.34	3.19	2.03	4.69	2.00	3.00	5.00	1096704
25	1-1/4	1016574	94.0	5.00	20.88	13.62	3.25	2.34	5.25	2.25	3.62	6.50	1090161
35	1-1/2	1016583	138.0	5.00	24.00	14.06	3.00	2.34	5.25	2.25	4.56	7.00	1090189

*Ultimate Load is 5 times the Working Load Limit. Individually Proof Tested to 2 times the Working Load Limit.



NOTE: For swivels larger than 35 tons, or designed to meet the requirements of demanding applications such as subsea applications, please contact the Crosby Engineered Solutions. For additional information concerning custom design products, contact:

In U.S.A. - Crosby's Engineered Solutions at 1-800-777-1555, Fax (918) 834-5035.

In Europe - N.V. Crosby Europe at +32 15 75 71 25.