

Crosby® Angular Contact Bearing Swivels



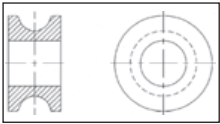
Angular Contact Bearing Swivels

- Wide range of product available.
 - Capacity: 0.45 through 35 tons
 - Wire Rope Sizes: 1/8" through 1-1/2"
- Individually Proof Tested to 2 times the Working Load Limit with certification
- Design Factor of 5 to 1.
- Entire swivel is Zinc plated to resist corrosion.
- Angular contact bearings maximize efficiency, reliability and service life of swivel and extend the life of the wire rope.
- Designed for high rotation speed: Lower torque required to initiate rotation.
- Hook models utilize genuine Crosby hooks which are forged alloy steel, Quenched and Tempered and contain patented QUIC-CHECK® markings.
- Each swivel 8.5 tons and larger, is furnished with a pressure lubrication fitting
- For swivels larger than those listed, contact Engineered Solutions at 1-800-777-1555.

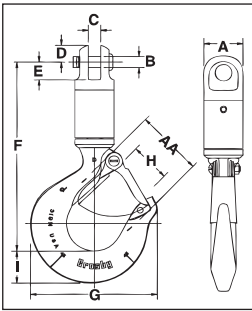
Wire Rope Size (in)	AS-20 Stock No.
1/2	1038200
5/8	1038209
3/4	1038218
7/8 - 1	1038227
1-1/8 - 1-1/4	1038236
1-1/2	1038245

AS-20 Thimble Insert

- When terminating with wire rope clips, we recommend the use of the Thimble Insert. The result will be extended wire rope life.
- Allows standard swivel to be used in application requiring a thimble fitting.
- For use with our Bullet Style (AS-7) and Jaw Style (AS-1, AS-2, AS-3 & AS-4) swivels.
- Machined from carbon steel. Zinc plated.



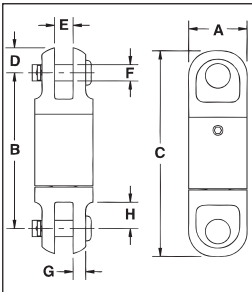
AS-1 Jaw & Hook



AS-1 JAW & HOOK				Dimensions (in)									Deformation Indicator AA	Replacement Latch Kit Stock No.
Working Load Limit (Tons)*	Wire Rope Size (in)	AS-1 Stock No.	Weight Each (lb)	A	B	C	D	E	F	G	H	I		
.45	1/8	1016001	.7	.88	.25	.25	.38	.41	4.32	2.86	.93	.73	1.50	1096325
.75	1/4	1016010	1.5	1.31	.38	.31	.44	.56	5.44	3.16	.97	.84	1.50	1096374
1.5	3/8	1016025	2.3	1.63	.50	.53	.69	.78	6.35	4.00	1.16	1.14	1.50	1096374
3.0	1/2	1016026	6.5	2.00	.75	.75	.94	1.19	8.69	4.84	1.41	1.44	2.50	1096374
5.0	5/8	1016040	12.9	2.50	.88	1.00	1.13	1.53	10.71	6.28	1.69	1.82	3.00	1096562
8.5	3/4	1016045	26.4	3.00	1.19	1.56	1.34	2.09	13.65	8.34	2.41	2.60	4.00	1096657
10	7/8	1016056	53.0	4.00	1.50	1.75	1.75	3.50	17.95	10.34	3.19	3.00	5.00	1096704
15	1	1016064	53.0	4.00	1.50	1.75	1.75	3.50	17.95	10.34	3.19	3.00	5.00	1096704
25	1-1/4	1016075	97.0	5.00	2.00	2.00	2.38	3.69	20.88	13.62	3.25	3.62	6.50	1090161
35	1-1/2	1016082	140.0	5.00	2.00	2.00	2.38	3.69	24.00	14.06	3.00	4.56	7.00	1090189

*Ultimate Load is 5 times the Working Load Limit. Individually Proof Tested to 2 times the Working Load Limit.

AS-2 Jaw & Jaw



AS-2 JAW & JAW				Dimensions (in)							
Working Load Limit (Tons)*	Wire Rope Size (in)	AS-2 Stock No.	Weight Each (lb)	A	B	C	D	E	F	G	H
.45	1/8	1016103	.4	.88	2.38	3.13	.38	.25	.25	.19	.41
.75	1/4	1016114	.9	1.31	3.56	4.44	.44	.31	.38	.22	.56
1.5	3/8	1016122	2.0	1.63	4.06	5.44	.69	.50	.50	.28	.78
3.0	1/2	1016131	4.9	2.00	6.25	8.13	.94	.75	.75	.38	1.19
5.0	5/8	1016139	9.6	2.50	7.75	10.63	1.13	1.00	.88	.53	1.53
8.5	3/4	1016148	15.8	3.00	9.63	12.31	1.34	1.56	1.19	.56	2.09
10	7/8	1016157	40.0	4.00	14.00	17.50	1.75	1.75	1.50	.81	3.50
15	1	1016166	40.0	4.00	14.00	17.50	1.75	1.75	1.50	.81	3.50
25	1-1/4	1016175	78.0	5.00	15.94	20.69	2.38	2.00	2.00	1.13	3.69
35	1-1/2	1016184	78.0	5.00	15.94	20.69	2.38	2.00	2.00	1.13	3.69

*Ultimate Load is 5 times the Working Load Limit. Individually Proof Tested to 2 times the Working Load Limit.



NOTE: For swivels larger than 35 tons, or designed to meet the requirements of demanding applications such as subsea applications, please contact the Crosby Engineered Solutions. For additional information concerning custom design products, contact:
 In U.S.A. - Crosby's Engineered Solutions at 1-800-777-1555, Fax (918) 834-5035.
 In Europe - N.V. Crosby Europe at +32 15 75 71 25.