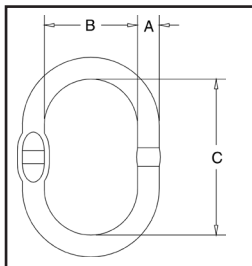


Crosby® Master Links A-344 and A-347 are manufactured to DNV Type Approval under DNV 2.7-1. Each lot of Master Links will be provided with a Product Certificate stating that the respective product and the noted PIC has been manufactured and tested according to the Type Approval in a facility approved by the Manufacturing Survey Agreement.



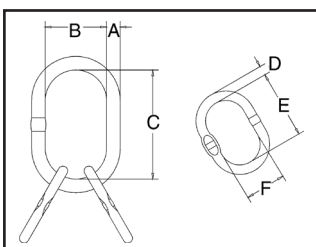
A-344



- Alloy Steel - Quenched and Tempered.
- Individually Proof Tested to values shown, with certification.
- Each link has a Product Identification Code (PIC) for material traceability, along with the size and the name Crosby® or "CG".
- Large inside length and width to allow room for sling hardware and crane hook.
- Links have DNV Type Approval to Rules for Certification of Lifting Appliances, and are produced in accordance with DNV MSA requirements. A 3.1 Certificate is available from Crosby (will soon be available through the Certpro "On-Line" Certificate Retrieval System).
- Meets the performance requirements of EN 1677-4:2000 + A1:2008.



A-347



### A-344 Welded Master Link

Size (mm)*	A-344 Stock No.	Weight (kg)	Working Load Limit 4:1*** (t)	Proof Load (kN)**	Dimensions (mm)		
					A	Width B	Length C
12	1256862	0.30	1.6	39	12	60	120
13	1256932	0.36	2.5	61	13	60	120
17	1257002	0.86	4.1	101	17	90	160
19	1257072	1.08	6.7	164	19	90	160
NEW 20	1257082	1.17	6.7	164	20	80	150
NEW 22	1257214	1.59	8.5	208	22	90	170
22	1257212	1.63	8.5	208	22	100	180
NEW 22	1257215	2.39	6.3	154	22	145	275
25	1257282	2.43	11.5	282	25	115	210
NEW 25	1257302	2.31	11.5	282	25	100	190
NEW 25	1257332	3.35	8.9	218	25	145	275
NEW 28	1257352	3.22	12.9	316	28	110	210
28	1257382	3.91	13	319	28	145	275
31	1257422	4.86	17	417	31	145	275
NEW 32	1257442	5.30	17	417	32	140	270
36	1257492	6.87	24	588	36	155	285
NEW 38	1257502	7.63	31.5	772	38	140	270
40	1257532	8.96	28.1	689	40	160	300
NEW 45	1257569	10.31	32	785	45	140	250
NEW 45	1257564	12.70	38.3	939	45	170	320
45	1257562	12.82	38.3	939	45	180	340
NEW 50	1257582	17.60	45	1103	50	200	380
51	1257632	18.72	45	1103	51	215	390
NEW 57 <sup>1</sup>	1257652	24.5	65.3	1601	57	203	406

\* Sizes up to 32 have an engineered flat. \*\* Proof Test Load equals or exceeds the requirements of ASTM A952 (8.1), EN 1677-4 and ASME B30.9. \*\*\*For use with wire rope slings the same Working Load Limits are valid (safety factor 5:1) with a proof load of 2 times the Working Load Limit. <sup>1</sup> Forged Link (57)

### A-347 Welded Master Link Assembly

Size (mm)*	A-347 Stock No.	Weight (kg)	Working Load Limit 4:1*** (t)	Proof Load (kN)**	Dimensions (mm)					
					A	Width B	Length C	D	Length E	Width F
13/12	1257692	0.82	2.4	59	13	60	120	12	85	45
17/13	1257762	1.58	4.1	101	17	90	160	13	120	60
19/13	1257832	1.80	4.25	104	19	90	160	13	120	60
NEW 22/20	1257977	3.93	8.5	208	22	90	170	20	150	80
22/17	1257972	3.35	6.7	164	22	100	180	17	160	90
NEW 22/16	1257979	3.53	5.8	142	22	145	275	16	120	60
NEW 25/20	1258122	4.65	10.7	262	25	100	190	20	150	80
NEW 25/19	1258102	5.51	8.9	218	25	145	275	19	160	90
NEW 28/22	1258162	6.40	12.9	316	28	110	210	22	170	90
28/22	1258142	7.17	14.5	355	28	145	275	22	180	100
31/25	1258182	9.72	17	417	31	145	275	25	210	115
NEW 32/25	1258202	9.92	17	417	32	140	270	25	190	100
NEW 36/28	1258222	12.20	23.6	579	36	145	275	28	190	100
NEW 38/32	1258224	18.23	28.1	689	38	140	270	32	270	140
40/31	1258332	18.68	28.1	689	40	160	300	31	275	145
NEW 45/38	1258422	27.96	38.3	939	45	170	320	38	270	140
45/36	1258402	26.56	38.3	939	45	180	340	36	285	155
NEW 50/38	1258442	32.86	45	1103	50	200	380	38	270	140
51/45	1258462	42.92	45	1103	51	190	350	45	340	180
NEW 57 <sup>1</sup> /50	1258482	59.70	67	1643	57	203	406	50	380	200

\* Sizes up to 40/31 have an engineered flat. \*\* Proof Test Load equals or exceeds the requirements of ASTM A952 (8.1), EN 1677-4 and ASME B30.9. \*\*\*For use with wire rope slings the same Working Load Limits are valid (safety factor 5:1) with a proof load of 2 times the Working Load Limit. <sup>1</sup> Forged Link (57)

Crosby<sup>®</sup> G/S-209 and G/S-2130 shackles are manufactured to DNV Type Approval under DNV 2.7-1. Each lot of shackles will be provided with a Product Certificate stating that the respective product and the noted PIC has been manufactured and tested according to the Type Approval in a facility approved by the Manufacturing Survey Agreement.

## Standard Features

- Type Approved Capacities – 3-1/4t (5/8") through 25t (1-3/4").
- Shackles have DNV Type Approval under DNV 2.7-1 and are produced in accordance with DNV MSA requirements. A 3.1 Certificate is available from Crosby (will soon be available through the CertPro "On-Line" Certificate Retrieval System).
- Type Approval and certification in accordance with ABS 2006 Steel Vessel Rules 1-1-17.7, and ABS Guide for Certification of Cranes.
- Meets the performance requirements of EN 13889:2003.
- Shackles meet DNV impact requirements of 42 joules at -20°C.
- Working Load Limit permanently shown on every shackle.
- Forged — Quenched and Tempered, with alloy pins.
- Fatigue rated.
- 25t shackle is RFID "FACTORY" EQUIPPED. 12t thru 17t can be RFID equipped in the field.
- Shackles 55t and smaller can be furnished proof tested with certificates to designated standards, such as ABS, DNV, Lloyds, or other certification when requested at time of order.
- Look for the Red Pin<sup>®</sup> . . . the mark of genuine Crosby quality.
- Consult Crosby catalog for additional shackle features.



G-209



G-2130

[www.thecrosbygroup.com](http://www.thecrosbygroup.com)

Load Rated<sup>®</sup>

**MAXTOUGH**<sup>®</sup>

**"TA"**  
TYPE APPROVED

Fatigue Rated<sup>™</sup>

QUIC-CHECK<sup>®</sup>



**"QT"**  
QUENCHED & TEMPERED

### Crosby Europe Offices:

**BELGIUM**  
Industriepark Zone B n°26  
2220 Heist-op-den-Berg  
P: (+32)(0)15 75 71 25  
F: (+32)(0)15 75 37 64  
sales@crosbyeurope.com

**FRANCE**  
21, rue du Petit Albi  
Parc d'Affaires Silic  
95800 Cergy - St. Christophe  
P: (+33)(0)1 34 201 180  
F: (+33)(0)1 34 201 188  
sales@crosbyeurope.fr

**THE NETHERLANDS**  
Celsiusstraat 51  
P.O. Box 518  
6710 BM Ede  
P: (+31)(0)318 690 999  
F: (+31)(0)318 690 933  
sales@crosbyeurope.nl

**UNITED KINGDOM**  
Unit 10, Fall Bank Industrial Estate  
Dodworth, Barnsley  
South Yorkshire S75 3LS  
P: (+44) (0)1226 290 516  
F: (+44) (0)1226 240 118  
sales@crosbyeurope.co.uk